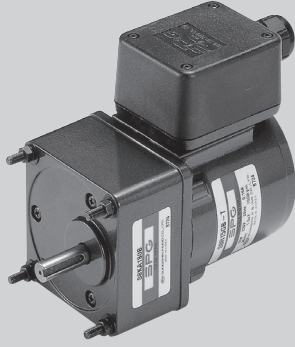


Powermec



15W

INDUCTION MOTOR, REVERSIBLE MOTOR
 80mm TERMINAL BOX TYPE

INDUCTION MOTOR - CONTINUOUS RATING

SIZE mm sq.	Type	Poles	Output (W)	Voltage (V)	Frequency (Hz)	Duty	Rated Load				Starting Torque		Capacitor (uF)
							Current (A)	Speed (rpm)	Torque (kg-cm) (N-m)		(kg-cm)	(N-m)	
80	S8R15GA-T S8R15GA-T1	4	15	1 Ø 110	60	Cont.	0.43	1600	1.00	0.100	1.20	0.120	4.0
	S8R15GB-T S8R15GB-T1	4	15	1 Ø 220	60	Cont.	0.22	1600	1.00	0.100	1.20	0.120	1.0
	S8R15GC-T S8R15GC-T1	4	15	1 Ø 100	50	Cont.	0.51	1300	1.20	0.120	0.95	0.095	4.0
					60		0.43	1550	1.00	0.100			
	S8R15GD-T S8R15GD-T1	4	15	1 Ø 200	50	Cont.	0.25	1300	1.20	0.120	0.95	0.095	1.0
					60		0.22	1550	1.00	0.100			
	S8R15GX-T S8R15GX-T1	4	15	1 Ø 220	50	Cont.	0.16	1200	1.30	0.130	0.95	0.095	1.0
				1 Ø 240					0.17	1.40			

❖ CE marked at the end of the model name indicates that it is thermally protected type which has received CE with built-in TP.

❖ TP marked at the end of the model name indicates that it is standard motor with Thermal Protector mounted.

S8R15GX-T is thermally protected type with TP mounted.

❖ "L" or "H" type does not apply to motors under 40W.

REVERSIBLE MOTOR - 30MINUTES RATING

SIZE mm sq.	Type	Poles	Output (W)	Voltage (V)	Frequency (Hz)	Duty	Rated Load				Starting Torque		Capacitor (uF)
							Current (A)	Speed (rpm)	Torque (kg-cm) (N-m)		(kg-cm)	(N-m)	
80	S8R15GA-T S8R15GA-T1 S8R15GA-T(TP) S8R15GA-T1(TP) S8R15GA-TCE S8R15GA-T1CE	4	15	1 Ø 110	60	30min.	0.49	1550	1.00	0.100	1.20	0.120	6.0
	S8R15GB-T S8R15GB-T1 S8R15GB-T(TP) S8R15GB-T1(TP) S8R15GB-TCE S8R15GB-T1CE	4	15	1 Ø 220	60	30min.	0.25	1550	1.00	0.100	1.20	0.120	1.5
	S8R15GC-T S8R15GC-T1 S8R15GC-T(TP) S8R15GC-T1(TP) S8R15GC-TCE S8R15GC-T1CE	4	15	1 Ø 100	50	30min.	0.58	1200	1.30	0.130	0.95	0.095	6.0
					60		0.48	1500	1.10	0.110			
	S8R15GD-T S8R15GD-T1 S8R15GD-T(TP) S8R15GD-T1(TP) S8R15GD-TCE S8R15GD-T1CE	4	15	1 Ø 200	50	30min.	0.29	1200	1.30	0.130	0.95	0.095	1.5
					60		0.25	1500	1.10	0.110			
	S8R15GE-T S8R15GE-T1 S8R15GE-TCE S8R15GE-T1CE	4	15	1 Ø 100	50	30min.	0.59	1250	1.30	0.130	0.95	0.095	6.0
				1 Ø 115	60		0.48	1550	1.20	0.120			4.5
					60		0.52	1600	1.10	0.110			
	S8R15GX-T S8R15GX-T1 S8R15GX-TCE S8R15GX-T1CE	4	15	1 Ø 220	50	30min.	0.16	1200	1.30	0.130	1.10	0.110	1.2
1 Ø 240				0.18					1.40	0.140			

❖ Appropriate capacitors shall be used according to the voltage for S8R15GE-T type since the size of the capacitor differs by different voltages. Malfunction may occur when not used properly. Capacitor for 115V will be delivered otherwise the required voltage is informed.

❖ CE marked at the end of the model name indicates that it is thermally protected type which has received CE. S8R15GE-TCE is available only for 115V specification.

❖ TP marked at the end of the model name indicates that it is standard motor with Thermal Protector mounted.

S8R15GE-T, S8R15GX-T is thermally protected type with TP mounted.

❖ Above data is measured with friction brake mounted.

❖ "L" or "H" type does not apply to motors under 40W.

50Hz

MODEL	GEAR RATIO	3	3.6	5	6	7.5	9	10	12.5	15	18	20	25	30	36	40	50	60	75	90	100	120	150	180	200
	rpm	500	416	300	250	200	166	150	120	100	83	75	60	50	41	37	30	25	20	16	15	12	10	8	7.5
S8KA□B	kg-cm	3.4	4.1	5.7	6.8	8.5	10.2	11.3	14.2	17.0	20.4	20.4	25.6	30.7	36.8	40.9	46.2	55.4	69.2	80	80	80	80	80	80
	N·m	0.333	0.402	0.559	0.666	0.833	1.000	1.107	1.392	1.666	1.999	1.999	2.509	3.009	3.606	4.008	4.530	5.433	6.786	7.840	7.840	7.840	7.840	7.840	7.840

60Hz

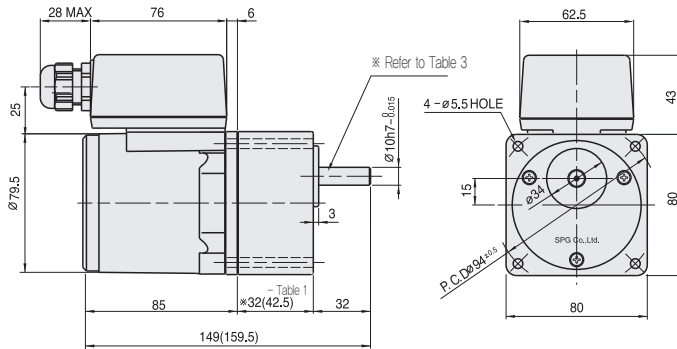
MODEL	GEAR RATIO	3	3.6	5	6	7.5	9	10	12.5	15	18	20	25	30	36	40	50	60	75	90	100	120	150	180	200
	rpm	600	500	360	300	240	200	180	144	120	100	90	72	60	50	45	36	30	24	20	18	15	12	10	9
S8KA□B	kg-cm	2.9	3.5	4.9	5.8	7.3	8.7	9.7	12.2	14.6	17.5	17.5	21.9	26.3	31.5	35.0	39.6	47.5	59.4	71.3	79.2	80	80	80	80
	N·m	0.284	0.343	0.481	0.568	0.715	0.853	0.951	1.196	1.432	1.715	1.715	2.146	2.577	3.087	3.430	3.881	4.658	5.825	6.992	7.767	7.840	7.840	7.840	7.840

- ❖ The code in □ of gearhead model is for gear ratio.
- ❖ It is the permissible torque of the assembled motor and gearhead.
- ❖ The permissible torque of the motor and inter-decimal gearhead is 80g-cm.
- ❖ ■ color indicates that the output shaft of the geared motor rotates in the same direction as the output shaft of the motor. Others indicate rotation in the opposite direction.
- ❖ Rpm is based on synchronous speed (50Hz: 1500rpm, 60Hz: 1800rpm) divided by gear ratio. The actual rotation speed can be 2~20% less than displayed value depending on the load.
- ❖ "L" or "H" type does not apply to motors under 40W.

DIMENSIONS

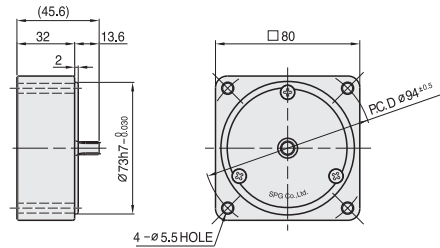
+ GEARED MOTOR

- ※ MOTOR MODEL : S8(L,R)15G□-T
- ※ HEAD MODEL : S8□A3□~S8□A200□



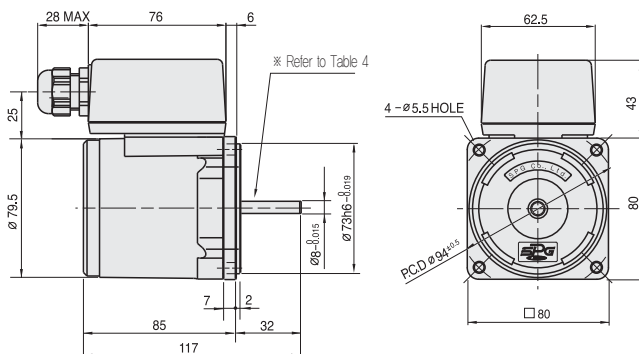
+ INTER-DECIMAL GEAR HEAD

- ※ MODEL : S8GX10B



+ MOTOR

- ※ MOTOR MODEL : S6R06□□-E



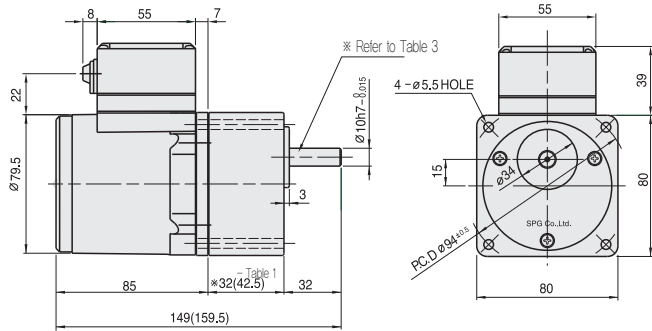
+ WEIGHT - (Table 2)

PART		WEIGHT(kg)
MOTOR		1.30
REVERSIBLE MOTOR		1.60
DECIMAL GEAR HEAD		0.43
GEAR HEAD	S8□A3□ ~S8□A18□	0.43
	S8□A20□ ~S8□A40□	0.57
	S8□A50□ ~S8□A200□	0.61

DIMENSIONS

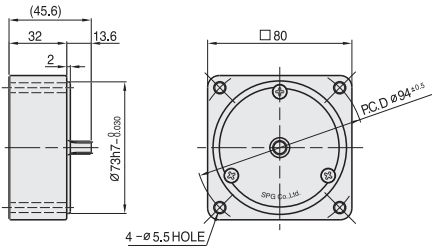
+ GEARED MOTOR

※ MOTOR MODEL : S8(I,R)15G□-T1
 ※ HEAD MODEL : S8□A3□~S8□A200□



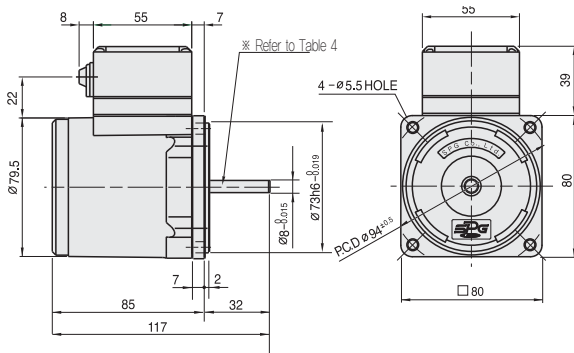
+ INTER-DECIMAL GEAR HEAD

※ MODEL : S8GX10B



+ MOTOR

※ MOTOR MODEL : S8(I,R)15□-T1



+ ※26(35) - (Table 1)

GEAR RATIO	SIZE(mm)
S8□A3□ ~ S8□A18□	32
S8□A20□ ~ S8□A200□	42.5

+ WEIGHT - (Table 2)

PART	WEIGHT(kg)	
MOTOR	1.25	
REVERSIBLE MOTOR	0.55	
DECIMAL GEAR HEAD	1.43	
GEAR HEAD	S8□A3□ ~ S8□A18□	0.43
	S8□A20□ ~ S8□A40□	0.57
	S8□A50□ ~ S8□A200□	0.61

+ KEY SPEC

GEAR HEAD	MOTOR

+ SPEC for output shaft of gearhead - (Table 3)

MODEL	TYPES OF OUTPUT SHAFT
STRAIGHT TYPE	
S8SA3□ ~ S8SA200□	
D-CUT TYPE	
S8DA3□ ~ S8DA200□	
KEY TYPE	
S8KA3□ ~ S8KA200□	

+ SPEC for output shaft of motor - (Table 4)

MODEL	TYPES OF OUTPUT SHAFT
GEAR TYPE	
S8(I,R)15G□-T S8(I,R)15G□-T1	
STRAIGHT TYPE	
S8(I,R)15S□-T S8(I,R)15S□-T1	
D-CUT TYPE	
S8(I,R)15D□-T S8(I,R)15D□-T1	
KEY TYPE	
S8(I,R)15K□-T S8(I,R)15K□-T1	