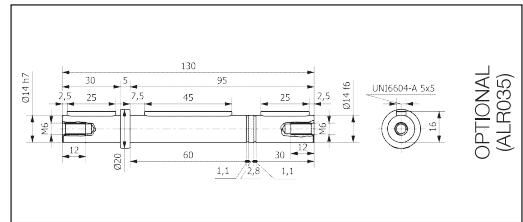
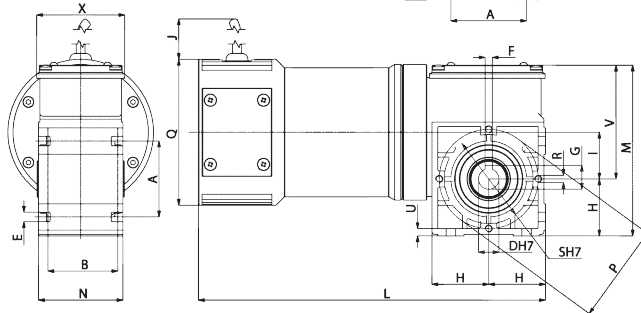
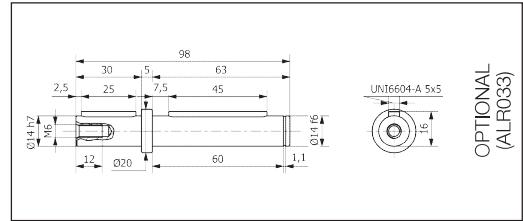
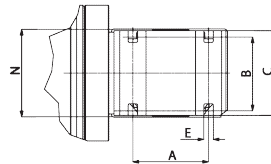
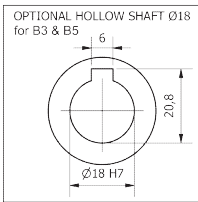




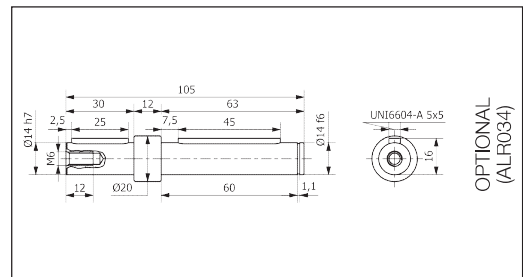
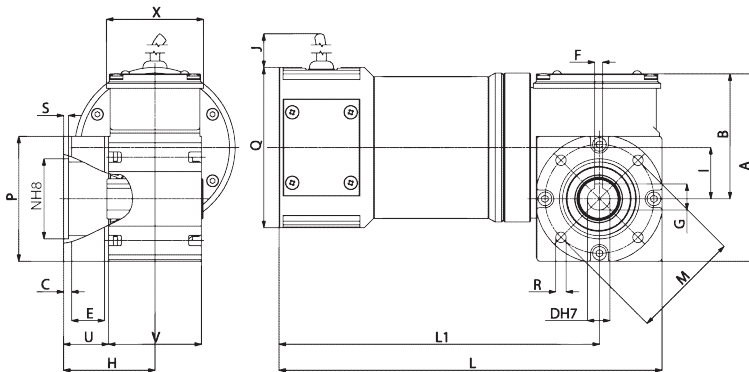
PCC

**CUSTOMIZED SOLUTIONS
ON REQUEST**



B3

| Tipo Type Typ Type Tipo | A | B | C | D | E | F | G | H | I | J | L | M | N | P | Q | R | S | U | X | Peso Weight Gewicht Poids Peso kg |
|-------------------------------------|----|----|----|----|-----|---|------|----|----|-----|-----|-----|----|----|-----|----|----|---|----|--|
| PCC 24 MP3N | 52 | 48 | 58 | 14 | 6,5 | 5 | 16,3 | 39 | 32 | 520 | 238 | 119 | 60 | 68 | 100 | M5 | 61 | 5 | 60 | 4,560 |
| PCC 24 MP4N | 52 | 48 | 58 | 14 | 6,5 | 5 | 16,3 | 39 | 32 | 520 | 288 | 119 | 60 | 68 | 100 | M5 | 61 | 5 | 60 | 6,455 |



B5/S

| Tipo Type Typ Type Tipo | A | B | C | D | E | F | G | H | I | J | L | L1 | M | N | P | Q | R | S | U | X | Peso Weight Gewicht Poids Peso kg |
|-------------------------------------|-----|----|---|----|------|---|------|----|----|-----|-----|-----|----|----|----|-----|-----|---|----|----|--|
| PCC 24 MP3N | 119 | 80 | 5 | 14 | 18,5 | 5 | 16,3 | 55 | 32 | 520 | 238 | 199 | 68 | 50 | 80 | 100 | 6,5 | 3 | 25 | 60 | 4,690 |
| PCC 24 MP4N | 119 | 80 | 5 | 14 | 18,5 | 5 | 16,3 | 55 | 32 | 520 | 288 | 249 | 68 | 50 | 80 | 100 | 6,5 | 3 | 25 | 60 | 6,585 |

IT Nella versione autofrenante aggiungere alla sigla del tipo la lettera KA o KB. Le quote L, L1, aumentano di 45 mm.

EN For the self-braking version, add the letter KA or KB to the type designation. Dimensions L, L1, increase by 45 mm.

DE In der Ausführung als Bremsmotor ist der Typen-Kurzbezeichnung der Buchstabe KA oder KB beizufügen. Die Masse L, L1, werdenn um 45 mm erhöht.

FR Pour la version avec frein ajouter au sigle du type les lettres KA ou KB. Les dimensions L, L1 augmentent de 45 mm.

ES En la versión freno, añadir las letras KA ó KB a la sigla del tipo. Las cotas L, L1 aumentan de 45 mm.